

**NEW FOR
2021**

WR5 AIR

The spinning aquabike

♥ Cardio ▲ Enduro Spinning



LIGHT WEIGHT
16Kg

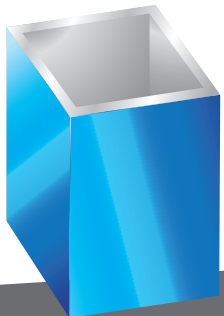
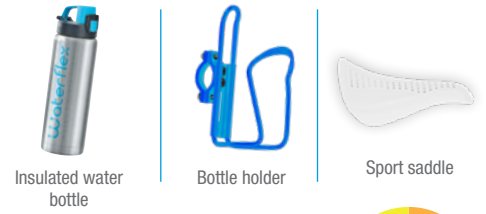


MECHANICAL RESISTANCE
WITH BREAK PAD



AQUA DOUBLE SPEED PEDALS

SPORT PACK INCLUDED



ANODIZED ALUMINIUM STRUCTURE

HIGH INTENSITY OBJECTIVES
Muscular Reinforcement & Athletization

40%
LIGHTER THAN
STAINLESS
STEEL

**ANODIZED
ALUMINIUM
STRUCTURE**

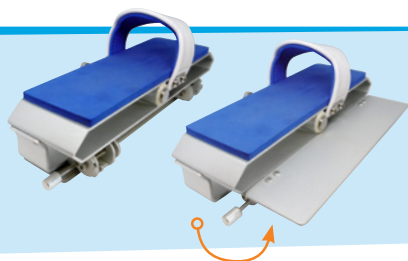


INNOVATION

Its new structure in T6 anodized aluminium allows it to display a featherweight of **16 kg**, ideal for **pool entrances and exits**, while ensuring perfect rigidity. Coupled with its wide feet and silicone suction cups, the WR5 Air is easy and reassuring to use. Its multiples adjustment of the feet, the saddle and the handlebars, as well as its pedals with variable resistance make it resolutely versatile.

AQUA DOUBLE SPEED PEDALS

+54%
RESISTANCE



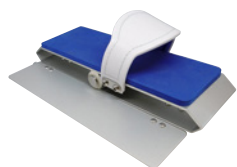
Conceived in aluminium and stainless steel, ADS pedals comprise a folding flap fitted on a hinge. They unfold and lock into place in a simple gesture.

Hydraulic resistance is increased by 54%. You can therefore enhance your cardio session.

ADJUSTABLE MECHANICAL RESISTANCE

Adjust your training level at any time with the central gear lever that activates the mechanical resistance system integrated by the pedals. As for a bicycle, you can simulate an uphill and create tonic

muscular reinforcement sessions. The WR5 Air is destined to Spinning activities with a coach. Results on the shape are immediate.



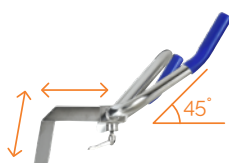
BAREFOOT USE

A foam covers the pedal as well as the inside of the strap to limit the irritations, even during intense efforts.



EXPRESS DRAINAGE

With its innovative, strategically-placed perforation system, the structure fills up or drains out in a matter of seconds. Combined with the aquabike's featherweight, introducing and retrieving it becomes extremely easy.



MULTI-POSITIONS HANDLEBARS

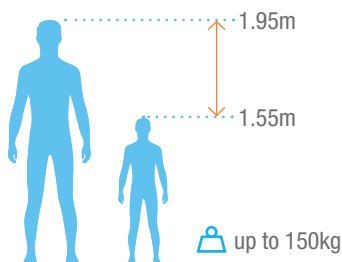
The handlebars' studied design and multiple settings offer many positions depending on the exercises. Their 45° angle allows a more upright sitting to relieve lumbar pain.



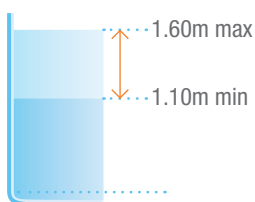
SACRIFICIAL ANODE

A well-known method in the marine environment, the sacrificial anode acts a fuse to prevent corrosion from seizing metal parts. It is not very visible and planned to change easily once completely corroded.

ERGONOMICS FOR ALL



ALL POOLS



| | |
|-------------------|--|
| Quality | T6 Aluminium Tech |
| Finishes | 15µm anodization |
| Dimensions closed | L 94 x W 55 x H 116 cm |
| Weight | 16 kg |
| Water depth | 1.10 m to 1.60 m |
| Warranty | 2 years metal parts / 6 months wearing parts |
| Reference | WX-WR5A |

Certification:

January 2021 edition

For more information
on our products and services
www.waterflex.fr

AUTHORIZED RESELLER

WWW.POOLSTAR.FR