


**NEW FOR
2021**

WR4 AIR

The tonic aquabike

♥ Cardio  Enduro  Spinning



 **Light Weight**
15.8 Kg



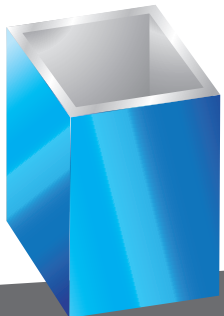
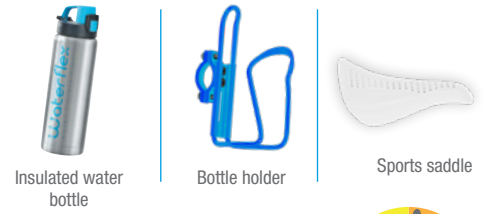
HYDRAULIC RESISTANCE
4-BLADE AQUAPALM SYSTEM



AQUA DOUBLE SPEED PEDALS



SPORT PACK INCLUDED



ANODIZED ALUMINIUM STRUCTURE

MODERATE INTENSITY

OBJECTIVES

Joint flexibility & Figure shaping



40%
LIGHTER THAN
STAINLESS
STEEL

**ANODIZED
ALUMINIUM
STRUCTURE**

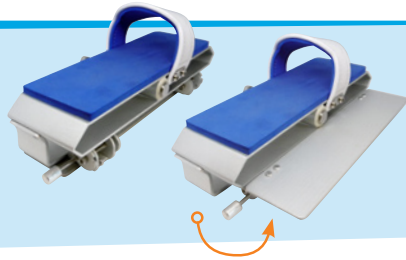


INNOVATION

Its new structure in T6 anodized aluminium allows it to display a featherweight of **15.8 kg**, ideal for **pool entrances and exits**, while ensuring perfect rigidity. Coupled with its wide feet and silicone suction cups, the WR4 Air is easy and reassuring to use. Its multiples adjustment of the feet, the saddle and the handlebars, as well as its pedals with variable resistance make it resolutely versatile.

AQUA DOUBLE SPEED PEDALS

+54%
RESISTANCE



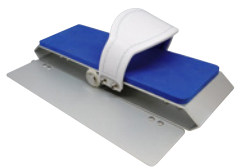
Conceived in aluminium and stainless steel, ADS pedals comprise a folding flap fitted on a hinge. They unfold and lock into place in a simple gesture.

Hydraulic resistance is increased by 54%. You can therefore enhance your cardio session.

ADJUSTABLE HYDRAULIC RESISTANCE

The central hydraulic resistance system is composed of 4 cups, which orientation can be adjusted. With a movement of the hand, easily turn the cup horizontally or vertically to adjust

your effort during training. The lower body firms up harmoniously with training for assured energy gain.



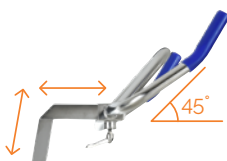
BAREFOOT USE

A foam covers the pedal as well as the inside of the strap to limit the irritations, even during intense efforts.



EXPRESS DRAINAGE

With its innovative, strategically-placed perforation system, the structure fills up or drains out in a matter of seconds. Combined with the aquabike's featherweight, introducing and retrieving it becomes extremely easy.



MULTI-POSITION HANDLEBARS

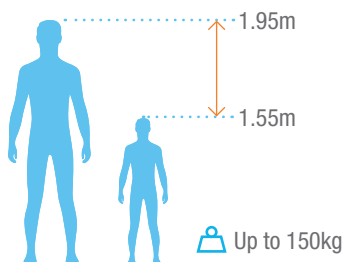
The handlebars' studied design and multiple settings offer many positions depending on the exercises. Their 45° angle allows a more upright sitting to relieve lumbar pain.



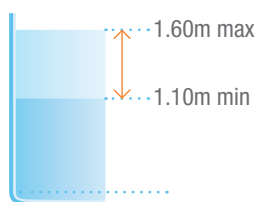
SACRIFICIAL ANODE

A well-known method in the marine environment, the sacrificial anode acts a fuse to prevent corrosion from seizing metal parts. It is not very visible and planned to change easily once completely corroded.

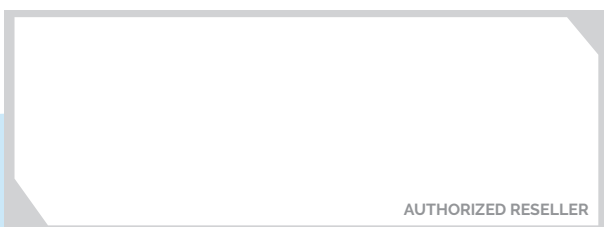
ERGONOMICS FOR ALL



ALL POOLS



Quality	T6 Aluminium Tech
Finishes	15µm anodization
Dimensions closed	L 94 x W 55 x H 116 cm
Weight	15.8 kg
Water depth	1.10 m to 1.60 m
Warranty	2 years metal parts / 6 months wearing parts
Reference	WX-WR4A



AUTHORIZED RESELLER

For more information
on our products and services
www.waterflex.fr

Certification:

January 2021 edition